

Your Pathway to Successful Therapy

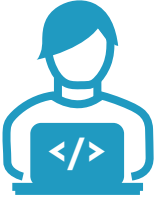
With KORU and the Freedom60 Infusion System you gain access to exclusive resources and support, including:



Reusable Infusion Mat – Designed for repeated use, this mat is your personal infusion prep area containing high-level instructions for quick reference.



Nursing Support – KORU's Clinical Team is available to address your questions. Simply call 800-624-9600 or email nursing@korumedical.com



Patient Portal – This dedicated resource center gives you direct access to:



Video Tutorials
"How-to" infusion library



User Manuals (IFUs)
FAQs, tips and more!

Discover more patient support at freedominfusion.com.

Hizentra® is a registered trademark of CSL Behring AG. All other third-party product names, logos, brands, trademarks, and registered trademarks are property of their respective owners.

The FREEDOM60® Syringe Infusion System, Precision Flow Rate Tubing™ and High-Flo Subcutaneous Safety Needle Sets™ are trademarks of KORU Medical Systems

©2023 KORU Medical Systems; All Rights Reserved. F60_MS_03-1137vB 10/2023



Freedom60®
INFUSION SYSTEM

SCIg infusions with the Freedom60® Infusion System



Open to discover your reusable infusion mat and reference tools!



Getting to know the 3 parts of your Freedom60 Infusion System

Freedom60®
INFUSION SYSTEM



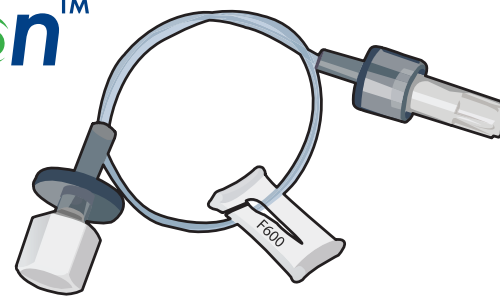
1 Freedom60® Infusion Pump

The syringe with medication is connected to the Precision tubing and placed in the pump. To begin infusing, the pump is turned ON and medication is pushed from the syringe into the tubing.

DID YOU KNOW?

This pump is equipped with KORU's responsive DynEQ® technology! This **smart feature** is designed to recognize oversaturation at the infusion site(s) and **respond in real time by reducing the pressure and slowing down the infusion to ultimately reduce swelling and irritation** at the infusion site(s).

Precision™
FLOW RATE TUBING



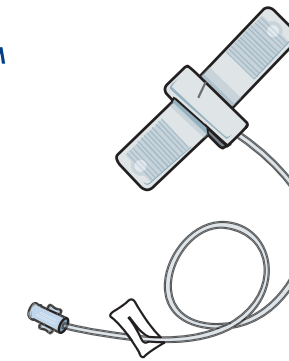
2 Precision Flow Rate Tubing*

One end of the tubing connects to the syringe and the other connects to the High-Flo needles. During the infusion this tubing regulates the "speed" or rate at which the drug flows to the needles during the infusion.

DID YOU KNOW?

This tubing is designed to **deliver accurate, consistent infusion rates**. With multiple flow rate options available, your **therapy can be personalized to your needs** with faster or slower infusion times.

High-Flo™
SUBQ NEEDLE SET



3 High-Flo Needle Set*

The luer end of the needle set tubing connects to the Precision tubing. Each needle is inserted into the layer of fatty tissue under the skin to infuse the medication subcutaneously where it can be absorbed into your body.

DID YOU KNOW?

The needles are designed to **minimize scarring**. The **needle sets offer multiple options**—number of needle sites, gauge (internal diameter that the drug flows through), and length—to personalize your infusion based on the dose and delivery requirements of your specific medication and your own personal needs.



The entire system is portable and it can easily travel with you wherever you go!

Caution: ONLY tubing and needles manufactured by KORU Medical Systems — i.e., Precision Flow Rate Tubing and High-Flo Subcutaneous Needle Sets - should be used with the Freedom60 Pump. Use of off-brand products may result in unknown flow rates.

Refer to the infusion mat located on the reverse side for more details about your Freedom60 Infusion System and instructions. Refer to the direct links to access more information online or call 800-624-9600 for additional information.

*Your Healthcare Professional team will select tubing and needle options based on weight and dose. Refer to drug manufacturer label indications.

Interested in shorter infusion times?

Would you like to use fewer needles?

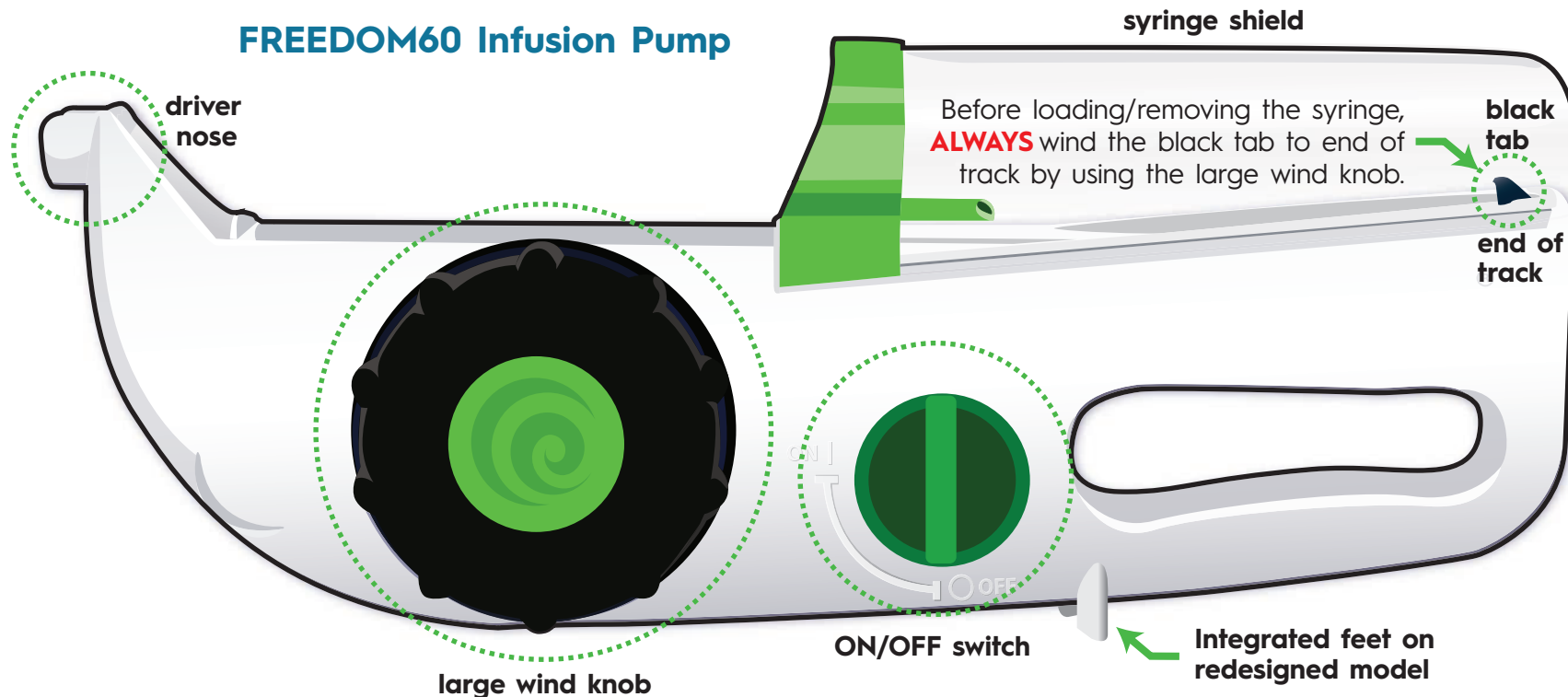
Once you have completed your initial infusions you can speak to your specialty pharmacist about simple changes in Precision Tubing and/or High-Flo Needles to streamline your infusion!

Use this area to gather supplies and ensure you have everything needed to begin your infusion prep!
Reminder – This mat is reusable! Be sure to wipe down the surface with an alcohol pad before each use.

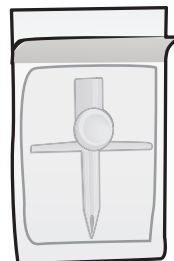
SCIG Infusion Mat

Compatible Syringes:

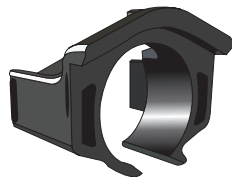
- 50 mL BD[®] Syringe
- 60 mL Medline[®] Syringe
- Hizentra[®] 50 mL prefilled syringe with Freedom60 Prefilled Syringe Adapter



Supplies for each Medication Option:



**Transfer Spike/
Needle Spike:**
Used to transfer
medication from vial



**Freedom60 Prefilled
Syringe Adapter:** Used
only with Hizentra 50 mL
syringe. See the Instructions
for Use for insertion and
removal instructions

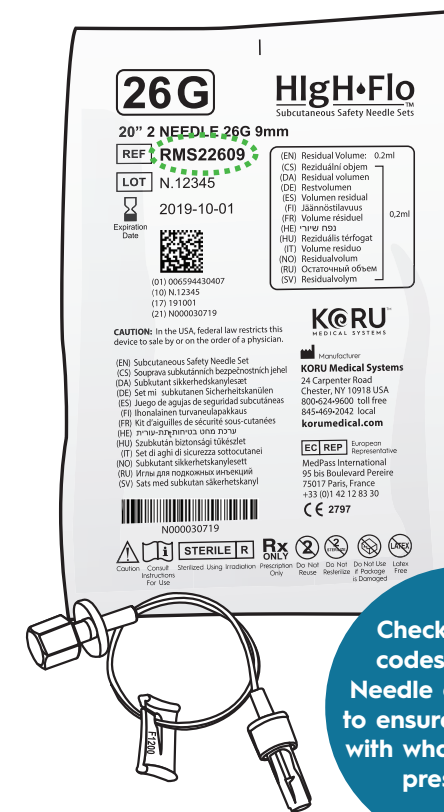


**Syringe to Syringe
Transfer Tool:** Used
to transfer medication
from Hizentra 5, 10
and 20 mL prefilled
syringes

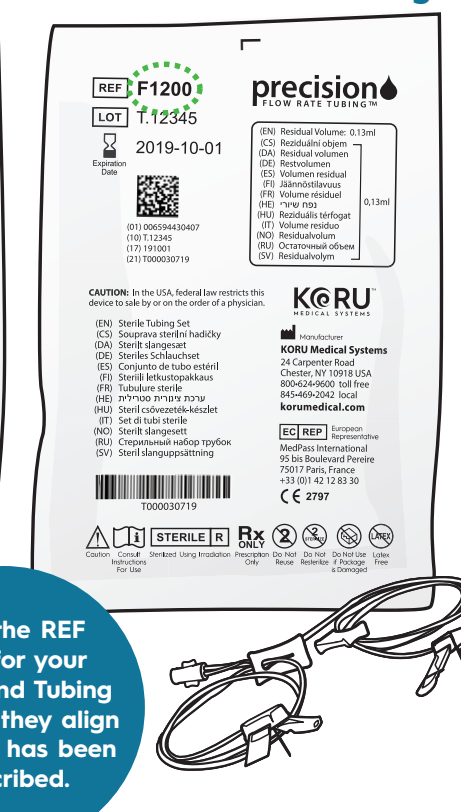
Alcohol/Chlorhexidine Pads



High-Flo Subcutaneous Needle Sets™



Precision Flow Rate Tubing™



Check the REF
codes for your
Needle and Tubing
to ensure they align
with what has been
prescribed.

Prep

Prime

Insert

Infuse

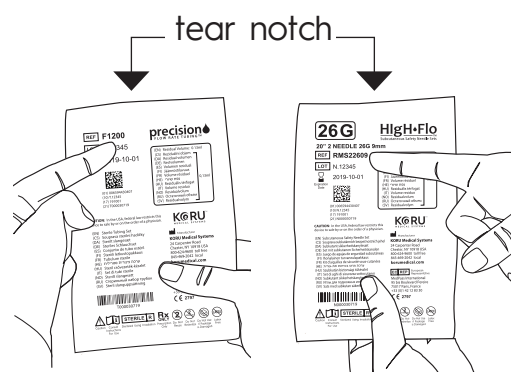
Before you begin:

- Gather all supplies and clean your work surface
- Wash hands thoroughly, putting on disposable gloves if required
- Verify you have the correct tubing and needle set prescribed
- Check pump functionality and examine shield to be sure it is free of debris or contamination



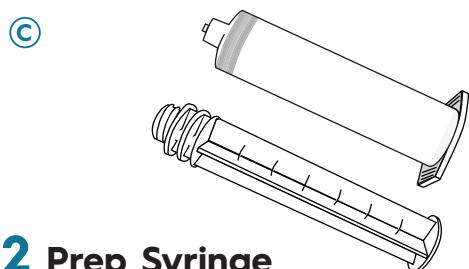
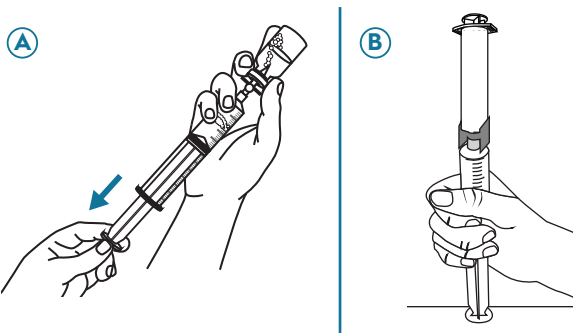
Read through all steps before starting and refer to the Instructions for Use for complete details, FAQs and more!

Always follow your healthcare provider's instructions and the information that came with your drug.



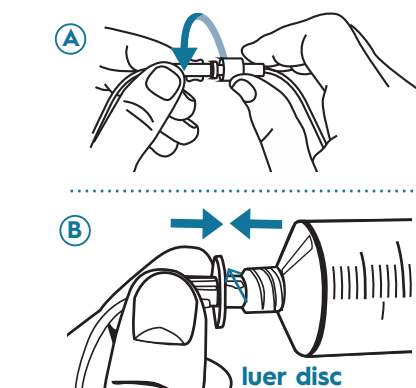
1 Preparing Tubing & Needles

- Open packages via tear notch
- Then inspect the tubing and needle sets. If damaged, discard, replace and contact your healthcare provider.



2 Prep Syringe

- Be sure medication is at room temperature.
- If transferring from vial(s) (A) or prefilled syringe(s) (B), fill required dose into compatible syringe.
- For Hizentra 50 mL prefilled syringe, connect the plunger rod (C)

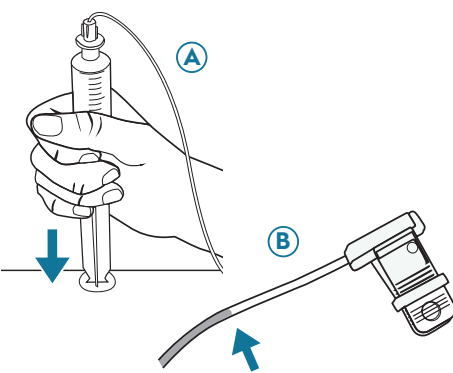


3 Attach Tubing

- Remove sterile caps from end of Precision tubing and High-Flo needle set and connect, using care not to contaminate ends. (A)
- Remove the cap from the luer disc end of Precision tubing and connect to syringe. (B)

4 Prime Tubing

Note: There are **two priming options: priming by hand or priming by pump.** Priming by hand, outlined below, is a common preference among patients and professionals. Always follow your healthcare provider's protocol.



Priming by hand

- Push syringe plunger (A) and watch as the tubing fills.
- Focus on a single needle (B) and release pressure from the plunger to stop the flow before fluid reaches the needle.

Priming by pump

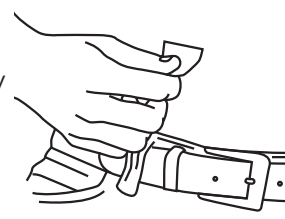
See Instructions for Use for more information

Tips:

- To best see the medication we suggest priming tubing in a well-lit area and against a solid-colored surface (use red block for support) in a well-lit area.
- It is recommended to insert needles dry to minimize site irritation.

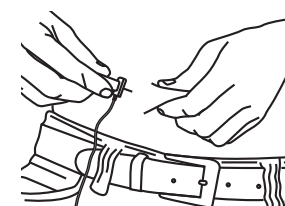
5 Prepare Sites

- Select, clean and let site(s) dry before inserting needle set.
- Carefully remove shield from needle tip, with care not to touch needle.



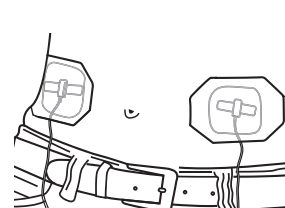
6 Insert Needle Set

- Pinch skin and insert each needle at a 90° angle.
- Secure each needle (see step 7) before inserting additional needles.



7 Secure Needle Set

- Peel printed side of dressing to expose adhesive
- Place adhesive dressing in center of the needle butterfly to secure and smooth it outward over skin
- Repeat for each site



8 Check for blood return

- Refer to your drug package insert to see if checking for blood return is a required step.
- If checking for blood return, please see the Freedom60 Instructions For Use for additional steps.

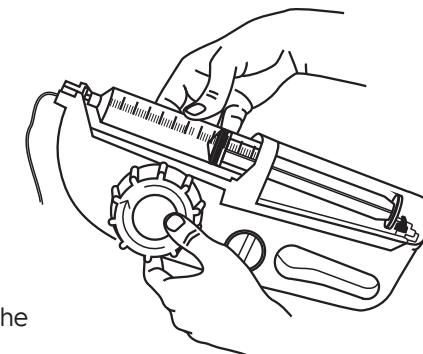


START

Note: The Freedom60 Prefilled Syringe Adapter must be installed when using the Hizentra 50 mL prefilled syringe and removed for all other compatible syringe use.

9 Insert Syringe

- With pump OFF and black tab at the end of its track, insert the syringe into pump with gradations facing up. (A)
- Ensure luer disc is seated in the pump nose (B)



10 Infuse

- Turn Pump ON to begin infusing
- Periodically check that the pump is working by seeing that the syringe plunger is moving.

If using multiple syringes:

- Turn pump OFF and wind the black tab to the end of the track before removing syringe.
- Once removed, disconnect tubing and attach to next syringe, using care not to touch not to contaminate ends (see step 3-B)
- Insert syringe into pump (see step 9)

END

11 Turn OFF

- With final syringe empty, turn pump OFF and wind large knob until the black tab is at the end of the track.

13 Remove Needle(s)

- Hold needle in place and peel back adhesive dressing.
- Remove needle in straight motion
- Cleanse site(s) and cover with bandage

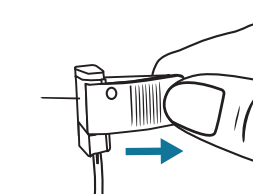
14 Discard Disposables

- Discard sharps and non-reusable supplies, like tubing and needle sets) as instructed by your healthcare provider



12 Remove Syringe

- Pull syringe away from pump nose and remove



15 Clean and Disinfect

- Clean and disinfect the pump and adapter as soon as possible after use and avoid delays between cleaning/disinfection steps. (see full instructions for use for details)